

Deployable ATC Automation and Communications System



**Deployable, reliable,
versatile, ready now**

Designed to be readily adaptable and easily transportable, the Deployable Air Traffic Control Automation and Communications System (DAACS) fills air traffic control needs with its transportable shelters. DAACS is equipped with STARS controller terminals, can send and receive flight data, and can be set up in less than eight hours.

System capabilities

DAACS provides expeditionary air traffic control approach and en-route capability for all types of aircraft. DAACS consists of transportable ATC operations shelters that are easily deployed to restore fixed facility services or expand expeditionary capabilities. It integrates with multiple sensor feeds and connects to existing communications infrastructure to perform all the same ATC functions that a permanent structure offers.

DAACS can be deployed for humanitarian relief missions, natural disasters, civil unrest, acts of terrorism or other situations where ATC services are temporarily unavailable. It can also be used to provide interim mission support when a fixed ATC facility is scheduled to be out of service due to modifications or upgrades. In 2019, DAACS was deployed to sustain Tyndall Air Force Base Radar Approach Control operations in Florida following Hurricane Michael.

Operations Shelter

- Positions: Four primary controllers, two assistants, one coordinator and one supervisor
- STARS or AutoTrac II/III automation
- VHF/UHF ground-to-air radios
- Voice communication control system
- Information display system
- Flight data input/output
- External interfaces (phones, VOIP, etc.)
- Enhanced Ground Based Detect and Avoid (GBDAA) software enabling decision-making for UAS operations



Operations Shelter interior

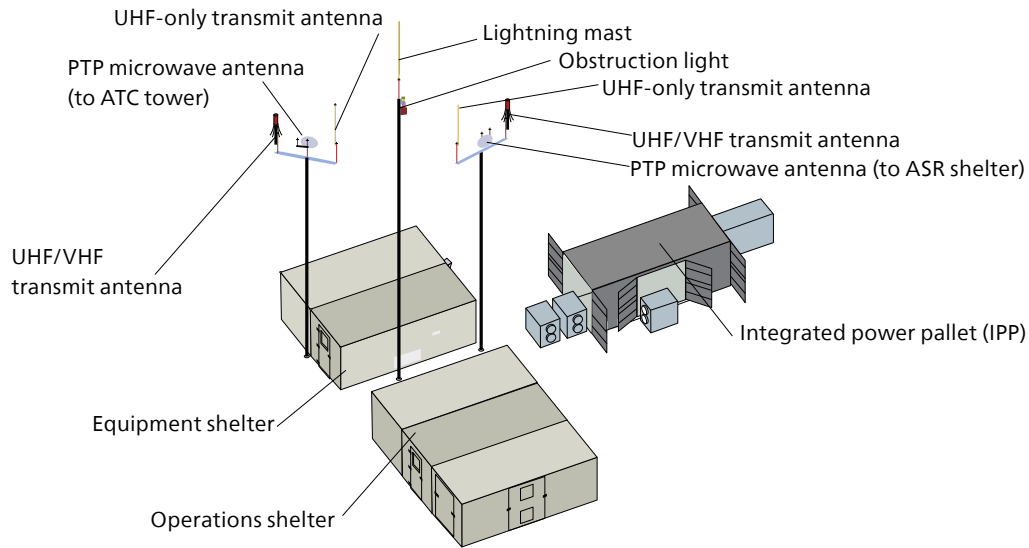


STARS ELITE supervisor position



Operational at Tyndall Air Force Base

Deployable ATC Automation and Communications System



Transport by truck

Transportable by air, truck or rail

- C130 (3), C17 (1), or C5 (1)
- Towable behind any vehicle equipped with a pintle, air brakes and 26,000 pounds towing capacity
- Two or three rail cars



C130 load



ASR-11/DASR integration capable

Interoperable with numerous sensors

- CARSR
- ARSR-4
- ASR-8
- ASR-9
- ASR-11
- AN/TPN-31 ATNAVICS
- ADS-B
- WAM



ATNAVICS integration capable

System setup

- Set up in less than 8 hours (with six personnel) plus 4-6 hours for complete system optimization
- No additional facilities or equipment required (e.g., cranes/fork lifts)
- Self-contained generators, UPS, and HVAC



Operations Shelter setup

Contact

Raytheon Intelligence & Space
Communications and
Airspace Management Systems
1001 Boston Post Road
Marlborough, MA 01752
USA



www.RTX.com